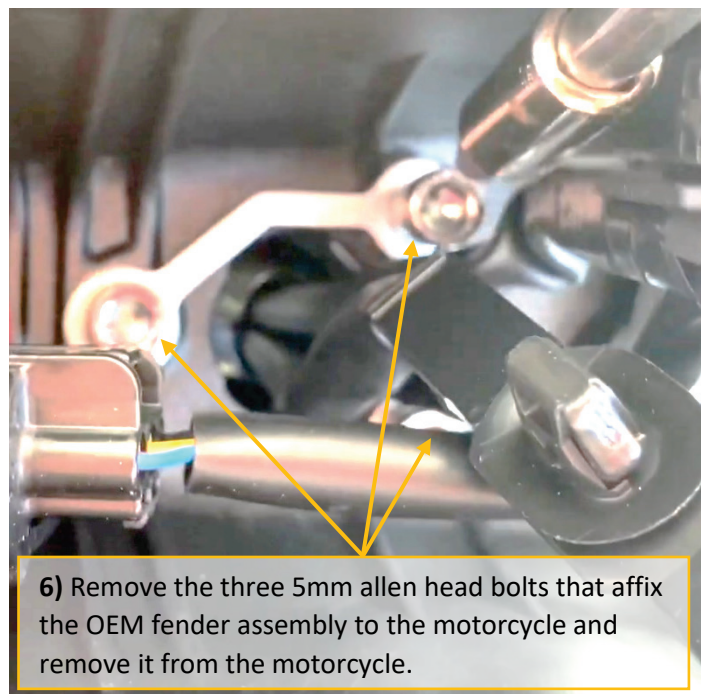
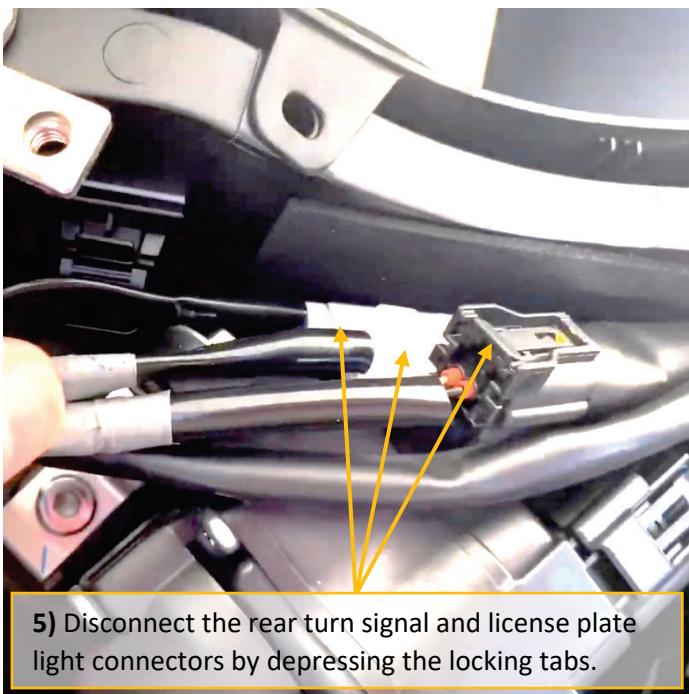
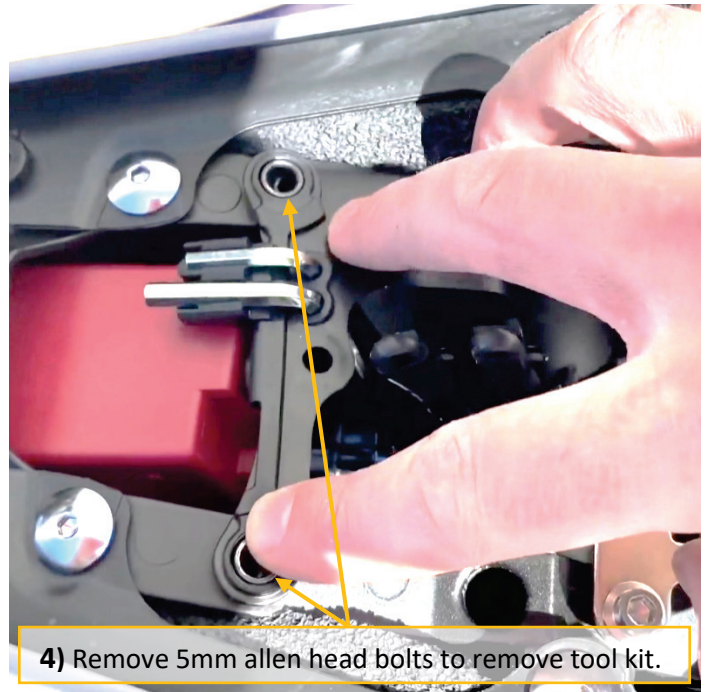


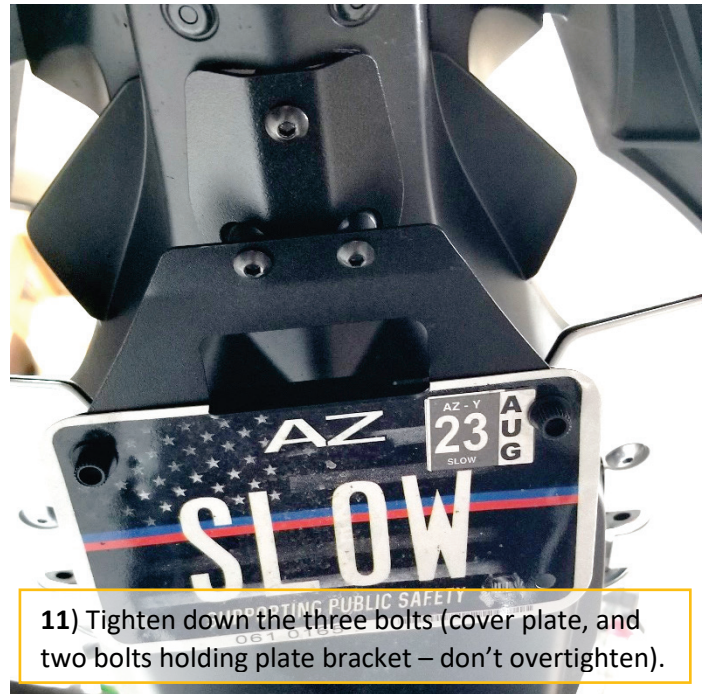
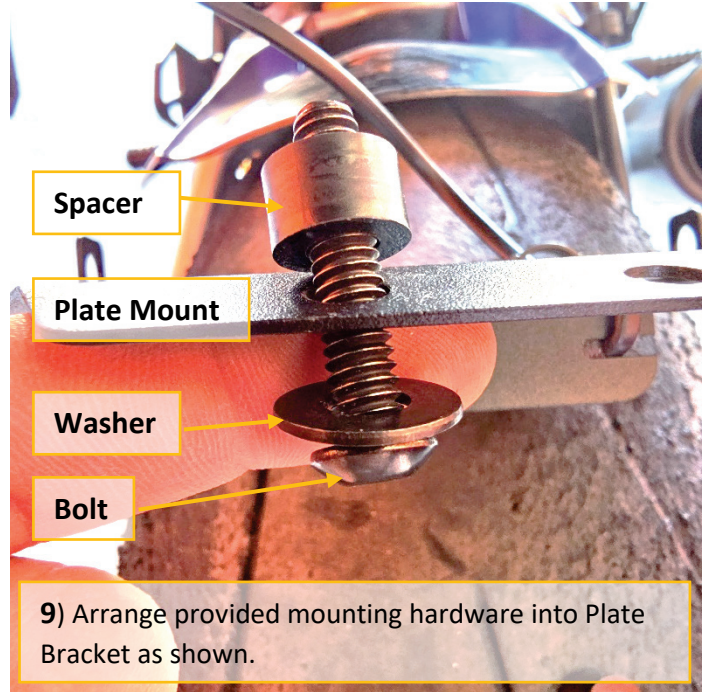
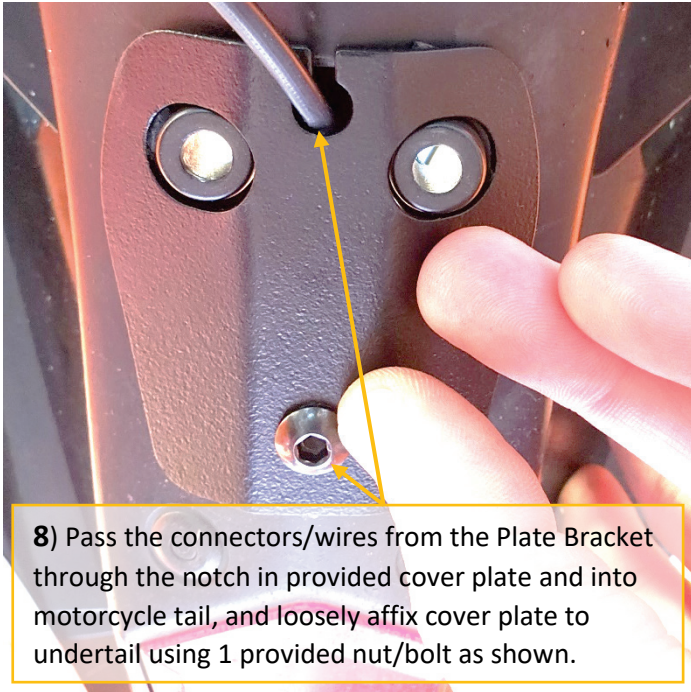
2015+ Yamaha YZF-R1 Ultimate Stealth License Plate Bracket Illustrated Installation Instructions

Download hi-resolution instructions at <https://www.customled.com/15R1PB-V2>

- 1) Secure motorcycle and prepare to remove the OEM fender assembly.
- 2) Remove the passenger seat and the riders seat.



- 7) If applicable, attach aftermarket turn signals to the Ultimate Stealth Plate Bracket at this time.



12) Connect the license plate light connector, and turn signal connectors if applicable.

13) Reinstall toolbox, plastic cover, passenger seat, and rider seat.

Thank you for choosing Custom LED, and supporting USA manufacturing. Please help spread the word! You can share Video of this product in action on **YouTube**, and share your pre and post-install pictures on **Instagram**. Be sure to tag us **@Custom_LED_LLC** in the pictures so they will appear on our website Instagram feed!